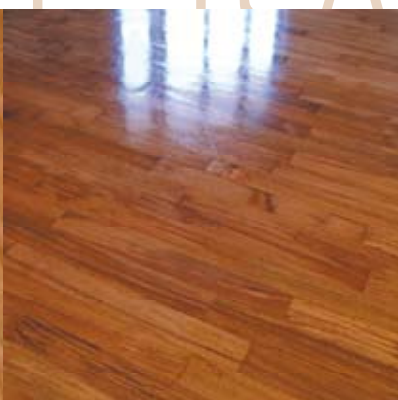
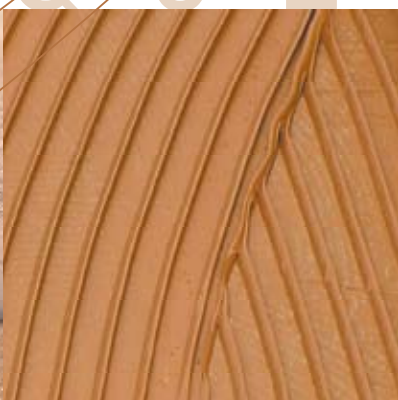




PARQUET RANGE



PRODUCTS
&
ACCESSORIES



PRODUCTS FOR THE PREPARATION OF THE FOUNDATIONS



ADHESIVES



BINDING AGENTS AND FILLERS



BASE COATS AND SEALERS



TOP COATS



MAINTENANCE PRODUCTS



THINNERS, ADDITIVES AND WAXES



ACCESSORIES



PRODUCTS FOR THE
PREPARATION
OF THE FOUNDATIONS



PRODUCTS FOR THE PREPARATION OF THE FOUNDATIONS

VALATEX400 - PRIMER FOR CEMENT SCREED



DESCRIPTION:

Liquid, latex-based primer, suitable for consolidating dust-shedding screed. Improves adhesion of leveled-off, skimmed areas.
If using as a hardener, dilute the product with between 1 and 4 parts water (depending on the porosity of the screed). Once dry, lay the floor using water-dispersion glue (MPC9).
If using as an adhesive to improve the adhesion of the self-leveler, use wet-on-wet application.

CONTAINER SIZE:

10 Kg

APPLICATION:

Brush or roller.

COVERAGE:

200-250 g/m²

New PRP360 - HIGH-SOLID MONOCOMPONENT PRIMER



DESCRIPTION:

High solid content monocomponent primer for cement screed. Can be used to harden the foundations or as a vapor barrier.

CONTAINER SIZE:

5 Kg

APPLICATION:

Brush or roller.

COVERAGE:

400-500 g/m² (as a hardener)
600-700 g/m² (as a vapor barrier)

New IS216 - MULTI-USE MOISTURE-CURING MONOCOMPONENT PRIMER



DESCRIPTION:

Transparent moisture-curing monocomponent primer. Can be used as a hardener for cement screed, a consolidating agent for loose or cracked parquet (restoration) or a base coat in wood-coating cycles.

CONTAINER SIZE:

10 L

APPLICATION:

Roller (if used as a hardener or sealant).
Spatula (if used for restoration).

COVERAGE:

400-500 g/m² (as a hardener)
80-100 g/m² (as a sealant and for restoration)

New EPOGLOSS + IND70 - EXTRA-TRANSPARENT BICOMPONENT EPOXY FILLER



DESCRIPTION:

Extra-transparent epoxy filler providing excellent adhesion and mechanical resistance. Can be used on transparent or colored resin floors and in castings for decorative pieces and silver/metal objects. Can also be used as a primer on cement screed (including screed used in underfloor heating) before the parquet is glued in place. Aggregates in various grain sizes can be added to create skim plaster and screed.

CONTAINER SIZE:

10 Kg + 6 Kg

APPLICATION:

Poured on (for floors and various objects).
Roller (as a primer).
Spatula (if used as skim plaster).

COVERAGE:

1200 g/m² for each millimeter of thickness (for floors)
400-500 g/m² (as a primer)
1 or 2 parts of resin and 8 or 9 parts of aggregate (for skim plaster and screed)

PRP300 + IND90 - ICASOLID R2A - BICOMPONENT EPOXY PRIMER FOR SCREED



DESCRIPTION:

Bicomponent epoxy primer that protects the surface by giving it greater consistency, resistance to abrasion and impermeability. Recommended for weak or friable cement screed, or – if several coats are applied – as a vapor barrier.

CONTAINER SIZE:

10 Kg + 10 Kg

APPLICATION:

Roller.

COVERAGE:

2-4 m²/l

HYDROEPOX3C - GRAY SELF-LEVELING TRICOMPONENT PRIMER



DESCRIPTION:

Tricomponent primer for cement screed and rough ceramic or marble surfaces. Mix the 3 components in the following order: resin (A), catalyzer (B), inert (C), until a smooth, lump-free paste is achieved.

CONTAINER SIZE:

2.5 Kg(A) + 3.75 Kg(B) + 7.5 Kg(C)

APPLICATION:

Spatula.

COVERAGE:

1000-1200 g/m²

New EPOXIBIANCO3C - WHITE TIXOTROPIC TRICOMPONENT PRIMER



DESCRIPTION:

White tixotropic tricomponent primer that can be used as a vapor barrier on screed and rough ceramic or marble surfaces. Can also be used when making floors and interior resin walls. Pigment can be added to this primer using water-based PA-series pastes. Mix the 3 components in the following order: resin (A), catalyzer (B), inert (C), until a smooth, lump-free paste is achieved.

CONTAINER SIZE:

2.5 Kg(A) + 3.75 Kg(B) + 7.5 Kg(C)

APPLICATION:

Spatula.

COVERAGE:

1000-1200 g/m² for each millimeter of thickness



ADHESIVES



ADHESIVES

MPC9 - MONOCOMPONENT WATER-DISPERSION ADHESIVE



DESCRIPTION:

Monocomponent adhesive suitable for the gluing of small and medium-sized parquet on cement foundations. Available in light (MPC9C) and dark (MPC9S) versions. Spread over the foundations against the grain of the wood, taking note of the time the glue has been exposed to the air and of the ambient temperature. Take care to avoid drafts. When laying the boards, apply light pressure.

CONTAINER SIZE:

20 Kg

APPLICATION:

Serrated spatula.

COVERAGE:

1000-1200 g/m²

P28A + P28B - BICOMPONENT EPOXY-POLYURETHANE ADHESIVE



DESCRIPTION:

Bicomponent epoxy-polyurethane adhesive suitable for the gluing of traditional and pre-finished parquet on cement foundations. Available in light (P28AC) and dark (P28AS) versions. If laying on ceramic, marble or metallic surfaces, ensure the surface is pre-roughened using appropriate equipment.

CONTAINER SIZE:

9 Kg (P28A) + 1 Kg (P28B)

APPLICATION:

Serrated spatula.

COVERAGE:

1000-1200 g/m² (on cement screed)
800-1000 g/m² (on ceramics)

New P29A + P29B - BICOMPONENT EPOXY-POLYURETHANE ADHESIVE



DESCRIPTION:

Bicomponent epoxy-polyurethane adhesive (hazardous-substance labeling not required) suitable for the gluing of traditional and pre-finished parquet (including floors with underfloor heating) on cement foundations. Available in light (P29AC) and dark (P29AS) versions. If laying on ceramic, marble or metallic surfaces, ensure the surface is pre-roughened using appropriate equipment.

CONTAINER SIZE:

9 Kg (P29A) + 1 Kg (P29B)

APPLICATION:

Serrated spatula.

COVERAGE:

1000-1200 g/m² (on cement screed)
800-1000 g/m² (on ceramics)

New P105A + P105B - BICOMPONENT POLYURETHANE ADHESIVE



DESCRIPTION:

Bicomponent polyurethane adhesive usable also by floor-layers allergic to epoxy resins and amines, suitable for gluing of traditional and pre-finished parquet on cement foundations. Available in light (P105AC) and dark (P105AS) versions. If laying on ceramic, marble or metallic surfaces, ensure the surface is pre-roughened using appropriate equipment, then apply a preliminary coat of HYDROEPOX3C.

CONTAINER SIZE:

10 Kg (P105A) + 1 Kg (P105B)

APPLICATION:

Serrated spatula.

COVERAGE:

1000-1200 g/m² (on cement screed)
800-1000 g/m² (on ceramics)

P35 ICA BOND - MONOCOMPONENT POLYURETHANE ADHESIVE



DESCRIPTION:

Light-colored monocomponent polyurethane adhesive. Amine-free, sound-proofing and elastic, it is suitable for gluing traditional or pre-finished parquet (even large-format parquet) without the use of nailing strips, on cement foundations (including those with underfloor heating), and on suitably prepared ceramic, marble or metallic surfaces. If laying on ceramic, marble or metallic surfaces, ensure the surface is pre-roughened using appropriate equipment. When laying traditional parquet without finger joints, it is essential to glue the heads with a water-dispersion glue (MPC9).

CONTAINER SIZE:

3 x 6 Kg (P35C)
20 x 1 Kg (P35CSA)
12 x 1.6 Kg (P35CSAMAX)

APPLICATION:

Serrated spatula.

COVERAGE:

800-1300 g/m² (depending on the format)



BINDING AGENT
AND FILLERS



BINDING AGENTS AND FILLERS

New FR499 - SOLVENT-BASED BINDING AGENT FOR FILLER



DESCRIPTION:

Colorless monocomponent binding agent for the filling of parquet, to be mixed with sawdust.

CONTAINER SIZE:

5 L – 10 L

APPLICATION:

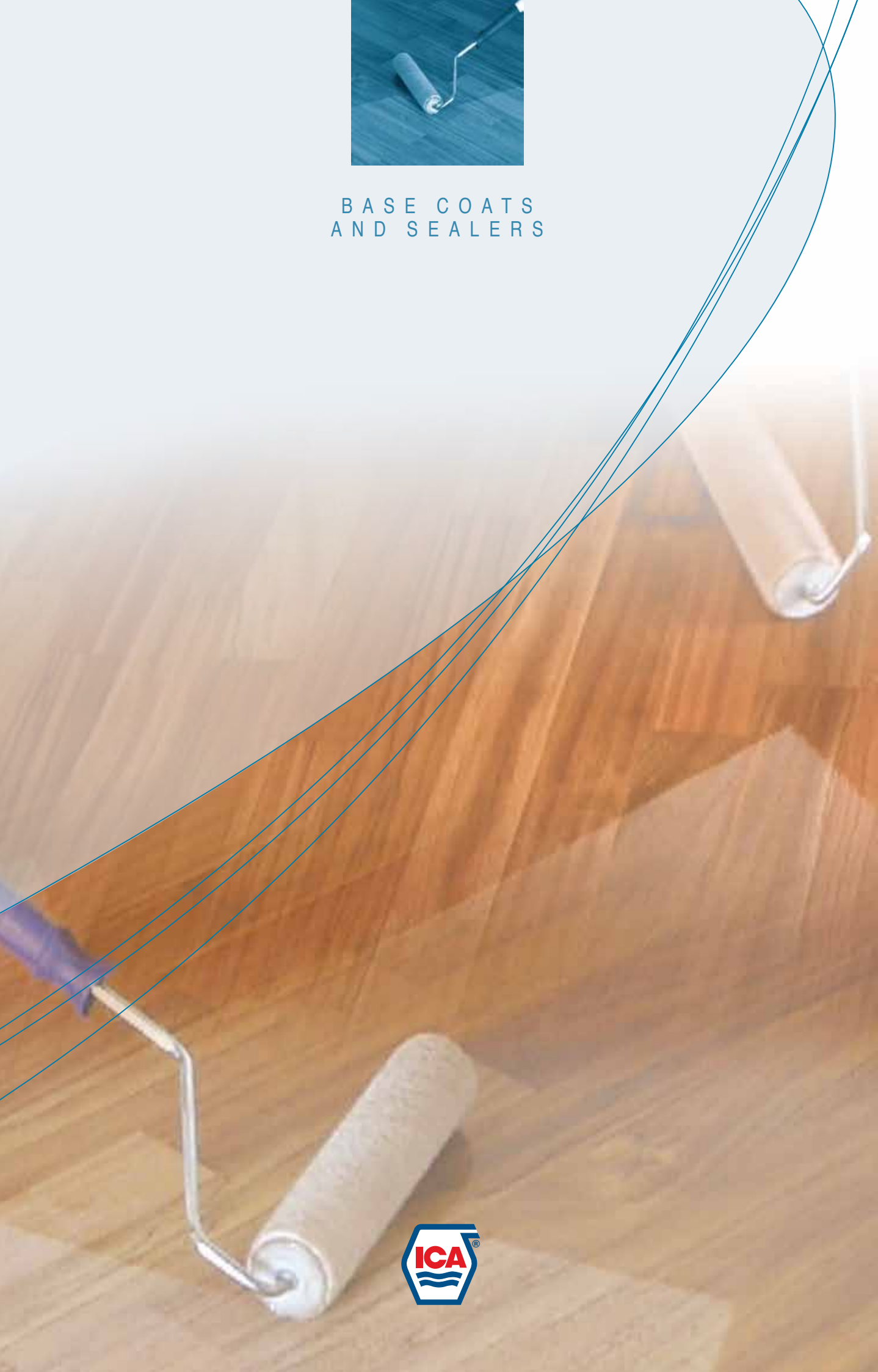
Smooth spatula.

COVERAGE:

60-80 g/m²



BASE COATS
AND SEALERS



BASE COATS AND SEALERS

New FA45 + CA508 - TRANSPARENT WATER-BASED BICOMPONENT BASE COAT/SEALER



DESCRIPTION:

Transparent bicomponent polyurethane water-based base coat/sealer providing excellent coverage, elasticity and chemical resistance. In addition, thanks to its high wettability, it reinvigorates the color of the wood.

CONTAINER SIZE:

5 Kg + 0.5 Kg

APPLICATION:

Roller.

COVERAGE:

80-100 g/m²

ISA14 - MONOCOMPONENT WATER-BASED SEALER



DESCRIPTION:

Monocomponent polyurethane water-based sealant that reinvigorates the wood fiber.

CONTAINER SIZE:

10 Kg

APPLICATION:

Roller or brush.

COVERAGE:

70-90 g/m²

ISA13 + CA510 - BICOMPONENT WATER-BASED SEALER



DESCRIPTION:

Bicomponent polyurethane water-based sealer providing excellent wettability of the wood fiber, adhesion and chemical resistance. Can be used in fire-retardant water-based cycles.

CONTAINER SIZE:

10 Kg + 1 Kg

APPLICATION:

Roller.

COVERAGE:

80-100 g/m²

New FP274TX + C600P - TRANSPARENT HIGH-SOLID BICOMPONENT BASE COAT



DESCRIPTION:

Transparent high-solid polyurethane base coat providing excellent coverage, chemical resistance, wood adhesion and elasticity. Enables compliance with the "Deco-Paint" standards thanks to its low VOC content. Free from aromatic solvents.

CONTAINER SIZE:

5 Kg + 5 Kg
10 Kg + 10 Kg

APPLICATION:

Roller.

COVERAGE:

70-90 g/m²

IS207FR + C207 - FIRE-RETARDANT BICOMPONENT POLYURETHANE SEALER



DESCRIPTION:

Bicomponent polyurethane sealer for fire-retardant cycles. Provides high wettability of the wood fiber, as well as excellent adhesion and chemical resistance.

CONTAINER SIZE:

5 L + 5 L
10 L + 10 L

APPLICATION:

Roller.

COVERAGE:

100 g/m²



TOP COATS



TOP COATS

New VPA208G10 + CA508 - BICOMPONENT NANOTECHNOLOGICAL WATER-BASED MATT TOP COAT



DESCRIPTION:

Transparent bicomponent nanotechnological water-based matt top coat (10 gloss), providing excellent abrasion resistance, hardness and chemical resistance. NMP-free.

CONTAINER SIZE:

5 Kg + 0.5 Kg
10 Kg + 1 Kg

APPLICATION:

Roller.

COVERAGE:

60-90 g/m²

New VPA208G30 + CA508 - BICOMPONENT NANOTECHNOLOGICAL WATER-BASED SEMI-MATT TOP COAT



DESCRIPTION:

Transparent bicomponent nanotechnological water-based semi-matt top coat (30 gloss), providing excellent abrasion resistance, hardness and chemical resistance. NMP-free. This product can also be used as a monocomponent coating.

CONTAINER SIZE:

5 Kg + 0.5 Kg
10 Kg + 1 Kg

APPLICATION:

Roller.

COVERAGE:

60-90 g/m²

New VPA208G60 + CA508 - BICOMPONENT NANOTECHNOLOGICAL WATER-BASED SEMI-GLOSS TOP COAT



DESCRIPTION:

Transparent bicomponent nanotechnological water-based semi-gloss top coat (60 gloss), providing excellent abrasion resistance, hardness and chemical resistance. NMP-free. This product can also be used as a monocomponent coating.

CONTAINER SIZE:

5 Kg + 0.5 Kg
10 Kg + 1 Kg

APPLICATION:

Roller.

COVERAGE:

60-90 g/m²

VPA202FR + CA510 - FIRE-RETARDANT BICOMPONENT WATER-BASED SEMI-MATT TOP COAT



DESCRIPTION:

Fire-retardant bicomponent polyurethane water-based semi-matt top coat (30 gloss), providing excellent chemical resistance, hardness and abrasion resistance.

CONTAINER SIZE:

5 L + 1 Kg
10 L + 1 Kg

APPLICATION:

Roller or brush.

COVERAGE:

Two coats x 60 g/m²

New OP600 + C600P - TRANSPARENT HIGH-SOLID BICOMPONENT MATT TOP COAT



DESCRIPTION:

Transparent bicomponent polyurethane matt top coat (30 gloss) with high solid content. Enables compliance with the "Deco-Paint" standards thanks to its low VOC content. Free from aromatic solvents.

CONTAINER SIZE:

5 Kg + 5 Kg
10 Kg + 10 Kg

APPLICATION:

Roller.

COVERAGE:

70-100 g/m²

TOP COATS

New OP601 + C600P - TRANSPARENT HIGH-SOLID BICOMPONENT SEMI-MATT TOP COAT



DESCRIPTION:

Transparent bicomponent polyurethane semi-matt top coat (45 gloss) with high solid content. Enables compliance with the "Deco-Paint" standards thanks to its low VOC content. Free from aromatic solvents.

CONTAINER SIZE:

5 Kg + 5 Kg
10 Kg + 10 Kg

APPLICATION:

Roller.

COVERAGE:

70-100 g/m²

New OP602 + C600P - TRANSPARENT HIGH-SOLID BICOMPONENT SEMI-GLOSS TOP COAT



DESCRIPTION:

Transparent bicomponent polyurethane semi-gloss top coat (65 gloss) with high solid content. Enables compliance with the "Deco-Paint" standards thanks to its low VOC content. Free from aromatic solvents.

CONTAINER SIZE:

5 Kg + 5 Kg
10 Kg + 10 Kg

APPLICATION:

Roller.

COVERAGE:

70-100 g/m²

New LP604 + C158P - TRANSPARENT HIGH-SOLID BICOMPONENT GLOSS TOP COAT



DESCRIPTION:

Transparent bicomponent polyurethane gloss top coat (95 gloss) with high solid content. Enables compliance with the "Deco-Paint" standards thanks to its low VOC content. Free from aromatic solvents.

CONTAINER SIZE:

5 Kg + 5 Kg
10 Kg + 10 Kg

APPLICATION:

Roller.

COVERAGE:

70-100 g/m²

OP398FR + C398P - FIRE-RETARDANT BICOMPONENT POLYURETHANE SEMI-GLOSS TOP COAT



DESCRIPTION:

Fire-retardant bicomponent polyurethane semi-gloss top coat (70 gloss).

CONTAINER SIZE:

10 L + 10 L

APPLICATION:

Roller or brush.

COVERAGE:

Two coats x 175 g/m²

LP158FR + C158P - FIRE-RETARDANT BICOMPONENT POLYURETHANE GLOSS TOP COAT



DESCRIPTION:

Fire-retardant bicomponent polyurethane gloss top coat (95 gloss).

CONTAINER SIZE:

10 L + 10 L

APPLICATION:

Roller or brush.

COVERAGE:

Two coats x 175 g/m²



MAINTENANCE
PRODUCTS



MAINTENANCE PRODUCTS

New CLEANING AND MAINTENANCE KIT



CODE AND DESCRIPTION:	PACKAGE:
1 KITPARQUET1 Cleaning and maintenance kit for parquet coated with water-based products or treated with oil/wax.	- PULIWOOD (1 L) - NATURLUX (1 L) - No. 1 microfiber cloth
2 KITPARQUET2 Cleaning and maintenance kit for pre-finished parquet or parquet coated with solvent-based products.	- PULIWOOD (1 L) - DEOLUX (1 L) - No. 1 microfiber cloth

PULIWOOD - NEUTRAL DETERGENT FOR COATED PARQUET



DESCRIPTION:		
Concentrated neutral liquid detergent, specifically designed for the delicate cleaning of parquet floors that have been coated or treated with wax. Add 2-3% to water.		
CONTAINER SIZE:	APPLICATION:	COVERAGE:
1 L	Microfiber cloth.	-

New DEOLUX - NEUTRAL REGENERATING FOR COATED PARQUET



DESCRIPTION:		
Neutral regenerating for pre-finished parquet or coated parquet with solvent-based products. It protects parquet floors from wear-and-tear and creates an anti-static, dust-resistant surface. Add 2-3% to water.		
CONTAINER SIZE:	APPLICATION:	COVERAGE:
1 L	Microfiber cloth.	-

NATURLUX - MAINTENANCE PRODUCT FOR PARQUET TREATED WITH OIL OR WAX



DESCRIPTION:		
Liquid product with natural solvent extracted from citrus fruits. Designed to help maintain parquet coated with water-based products or treated with oil/wax. It protects parquet floors from wear-and-tear and creates an anti-static, dust-resistant surface.		
CONTAINER SIZE:	APPLICATION:	COVERAGE:
1 L	Microfiber cloth.	10-15 g/m ²

LEGNOLUX - MAINTENANCE POLISH FOR COATED PARQUET



DESCRIPTION:		
Water-based polish with high-quality Carnuba wax and beeswax for the maintenance of parquet floors with worn coating films. Suitable for parquets coated with water-based or solvent-based products.		
CONTAINER SIZE:	APPLICATION:	COVERAGE:
1 L	Microfiber cloth or wax spreader.	10-15 g/m ²



THINNERS, ADDITIVES AND WAXES



THINNERS, ADDITIVES AND WAXES

D1016 - PURE ACETONE



DESCRIPTION:

99%-pure acetone.

CONTAINER SIZE:

5 L - 10 L

APPLICATION:

-

COVERAGE:

-

D1024 - RETARDANT POLYURETHANE THINNER



DESCRIPTION:

Slow-evaporating polyurethane thinner.

CONTAINER SIZE:

5 L - 10 L

APPLICATION:

-

COVERAGE:

-

D1072 - RETARDANT FOR WATER-BASED COATINGS



DESCRIPTION:

Retardant for water-based coatings.

CONTAINER SIZE:

5 L - 10 L

APPLICATION:

-

COVERAGE:

-

PRP200 - SPECIAL PREPARATION FOR VITREOUS OR CERAMIC SURFACES



DESCRIPTION:

Promotes the adhesive properties of enameled surfaces, such as ceramics or marble, and has the power to eliminate any residual traces of grease that may remain after the surface has been cleaned. Also builds up an excellent reactive-adhesive film.

CONTAINER SIZE:

5 L

APPLICATION:

Microfiber cloth or wax spreader.

COVERAGE:

10-15 m²/l

0033CAP02 - ANTIQUING WAX



DESCRIPTION:

Antiquing beeswax for wood.

CONTAINER SIZE:

1 L

APPLICATION:

Brush.

COVERAGE:

-



ACCESSORIES



ACCESSORIES PROTECTION

GLOVES



CODE AND DESCRIPTION:

1 Natural-latex gloves with smooth exterior and cotton lining. Suitable for prolonged cleaning tasks. Thickness 1.15 mm. General chemical protection EN 374. CE mark.

018LIS01 Size S
018LIM01 Size M
018LIL01 Size L
018LIXL01 Size XL

No. PER PACK:

5 pairs

2 **018FC01** High-resistance, polyamide-mesh gloves, with non-skid texture on the palm and cotton lining. These extremely comfortable gloves are fully breathable. CE mark. One size fits all.

10 pairs

MASKS



CODE AND DESCRIPTION:

1 **019CP101** Mask to protect the respiratory apparatus from solid and liquid aerosols with TLV > 10 mg/m³. Protection class FF P1, EN 149:2001. Usage level 4XTLV. CE mark.

No. PER PACK:

20 pairs

2 **019CP201** Mask with active carbon and exhalation valve, to protect the respiratory apparatus from dust, mist and fumes with TLV > 0.1 mg/m³ and to trap – thanks to the active carbon – vapors, gases and unpleasant odors. Protection class FF P2, EN 149:2001. Usage limit for dust: 10XTLV. Usage limit for gases and vapors < TLV. CE mark.

10 pairs

ORONASAL RESPIRATOR



CODE AND DESCRIPTION:

019SA201 Silicon-rubber oronasal mask, complete with **019SA2R01** filters to protect the wearer from organic gases and vapors with a boiling point of > 65°C. Maximum concentration of air pollutants: 5,000 ppm (0.5%). Protection class A2, EN 14387:2004. CE mark.

No. PER PACK:

1

FILTER AND PRE-FILTER FOR ORONASAL RESPIRATOR



CODE AND DESCRIPTION:

1 **019SA2R01** Replacement filter for respirator **019SA201**. Protection class A2, EN 14387:2004. CE mark.

No. PER PACK:

8

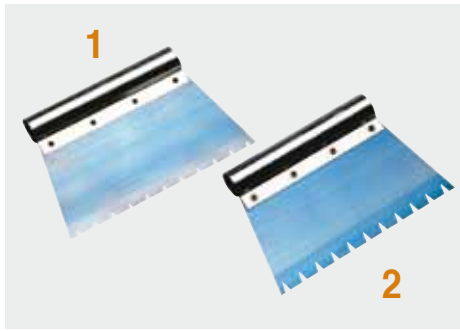
2 **019SP2R01** Pre-filter for P2-class dust, for insertion above the **019SA2R01** filter.

16

ACCESSORIES

EQUIPMENT

SERRATED SPATULA FOR ADHESIVES



CODE AND DESCRIPTION:	No. PER PACK:
1 024DB01 Spatula with low serrated edge for adhesives	12
2 024DA01 Spatula with high serrated edge for adhesives	12

SMOOTH SPATULA



CODE AND DESCRIPTION:	No. PER PACK:
024L2701 Smooth spatula for the application of plaster and water-based coatings	1

GRADUATED MEASURING JUGS



CODE AND DESCRIPTION:	No. PER PACK:
1 008T101 Graduated polypropylene (PP) measuring jug, 1 L	1
2 008T201 Graduated polypropylene (PP) measuring jug, 2 L	1
3 008T301 Graduated polypropylene (PP) measuring jug, 3 L	1
4 008T501 Graduated polypropylene (PP) measuring jug, 5 L	1

GRADUATED MEASURING CYLINDERS



CODE AND DESCRIPTION:	No. PER PACK:
1 008M01001 Graduated polypropylene (PP) measuring cylinder, 10 ml	1
2 008M02501 Graduated polypropylene (PP) measuring cylinder, 25 ml	1
3 008M05001 Graduated polypropylene (PP) measuring cylinder, 50 ml	1
4 008M10001 Graduated polypropylene (PP) measuring cylinder, 100 ml	1

KING-SIZE BUCKET FOR COATINGS



CODE AND DESCRIPTION:	No. PER PACK:
1 041SK01 Bucket for paints and varnishes	1
2 041SV01 Liners for bucket 014SK01	50

ACCESSORIES EQUIPMENT

MIXERS FOR BICOMPONENT WATER-BASED COATINGS



CODE AND DESCRIPTION:		No. PER PACK:
1	006D05501 Mixer (Ø 55 mm), suitable for containers up to 5 L	1
2	006D08001 Mixer (Ø 80 mm), suitable for containers up to 10 L	1
3	006D12001 Mixer (Ø 120 mm), suitable for containers up to 50 L	1
4	006D15001 Mixer (Ø 150 mm), suitable for containers up to 150 L	1

FILTER CUP FOR COATINGS



CODE AND DESCRIPTION:		No. PER PACK:
1	004TFA01 Aluminum filter cup	1
2	004R20001 Mesh for filter cup 004TFA01 200 microns 004R35001 Mesh for filter cup 004TFA01 350 microns	By the meter (width 1200 mm)

ROLLERS



CODE AND DESCRIPTION:		No. PER PACK:
1	043G25AS02 Micro-fiber roller for water-based and solvent-based coatings	6
2	043G25A01 Acroll roller for water-based coatings	6
3	043G25S02 Mohair roller for solvent-based coatings	6

CAGE FRAME



CODE AND DESCRIPTION:		No. PER PACK:
042G2501 25 cm cage frame		1

ARC-SHAPED ROLLER WRINGER AND CONTAINER



CODE AND DESCRIPTION:		No. PER PACK:
1	045ASR01 Arc-shaped roller wringer	1
2	045CRS01 Container for single roller	1

ACCESSORIES

EQUIPMENT

OREL BRUSH, 50 mm



CODE AND DESCRIPTION:

009OR5001 Brush with orel bristles, 50 mm.
Particularly recommended for water-based coatings.

No. PER PACK:

1

EXTENDABLE HANDLE FOR ROLLERS



CODE AND DESCRIPTION:

046MAL01 Extendable aluminum handle for rollers.

No. PER PACK:

1

SWEEPER FOR USE WITH ANTI-STATIC CLOTHS



CODE AND DESCRIPTION:

1 046APA01 Sweeper for use with anti-static cloths – ideal for cleaning parquet floors before applying the coating

No. PER PACK:

1

2 040PAS01 Anti-static cloths for 046APA01

50

PRESSURE GUN FOR P35 ICA BOND ADHESIVE



CODE AND DESCRIPTION:

022SP01 Pressure gun for the application of P35 ICA BOND adhesive in 600 ml bag (P35CSA light and P35SSA dark).

No. PER PACK:

1

COMPRESSED-AIR GUN FOR P35 ICA BOND ADHESIVE



CODE AND DESCRIPTION:

022SM01 Compressed-air gun for the application of P35 ICA BOND adhesive in 1340 g bag (P35CSAMAX light and P35SSAMAX dark).

No. PER PACK:

1

ACCESSORIES

ABRASIVES

ZIRCONIUM ABRASIVE CLOTH BELTS



CODE:	GRITS:	DIMENSIONS*:	No. PER PACK:
NTR817024-0203-00750	24	203x750 mm	1
NTK672036-0203-00750	36	203x750 mm	1
NTK672040-0203-00750	40	203x750 mm	1
NTK672050-0203-00750	50	203x750 mm	1
NTK672060-0203-00750	60	203x750 mm	1

*Also available: 203 x 473 mm and 203 x 1000 mm.

ABRASIVE CLOTH BELTS



CODE:	GRITS:	DIMENSIONS*:	No. PER PACK:
NTM240024-0203-00750	24	203x750 mm	1
NTM240036-0203-00750	36	203x750 mm	1
NTM240040-0203-00750	40	203x750 mm	1
NTM240050-0203-00750	50	203x750 mm	1
NTM240060-0203-00750	60	203x750 mm	1
NTM240080-0203-00750	80	203x750 mm	1
NTM240100-0203-00750	100	203x750 mm	1
NTM240120-0203-00750	120	203x750 mm	1

* Also available: 203 x 473 mm and 203 x 1000 mm.

ZIRCONIUM ABRASIVE CLOTH ROLLS, 50 m



CODE:	GRITS:	DIMENSIONS:	No. PER PACK:
RTR817024-0203	24	203 mm	1 x 50 m roll
RTK672036-0203	36	203 mm	1 x 50 m roll
RTK672040-0203	40	203 mm	1 x 50 m roll
RTK672050-0203	50	203 mm	1 x 50 m roll
RTK672060-0203	60	203 mm	1 x 50 m roll

ABRASIVE CLOTH ROLLS, 50 m



CODE:	GRITS:	DIMENSIONS:	No. PER PACK:
RTM240024-0203	24	203 mm	1 x 50 m roll
RTM240036-0203	36	203 mm	1 x 50 m roll
RTM240040-0203	40	203 mm	1 x 50 m roll
RTM240050-0203	50	203 mm	1 x 50 m roll
RTM240060-0203	60	203 mm	1 x 50 m roll
RTM240080-0203	80	203 mm	1 x 50 m roll
RTM240100-0203	100	203 mm	1 x 50 m roll
RTM240120-0203	120	203 mm	1 x 50 m roll

COMBINED ROLLS, 50 m



CODE:	GRITS:	DIMENSIONS:	No. PER PACK:
RCC82N024-0203	24	203 mm	1 x 50 m roll
RCC82N024-0254	24	254 mm	1 x 50 m roll
RCC82N040-0203	40	203 mm	1 x 50 m roll
RCC82N040-0254	40	254 mm	1 x 50 m roll
RCC82N050-0203	50	203 mm	1 x 50 m roll
RCC82N050-0254	50	254 mm	1 x 50 m roll

ACCESSORIES

ABRASIVES

ABRASIVE PAPER ROLLS, 50 m



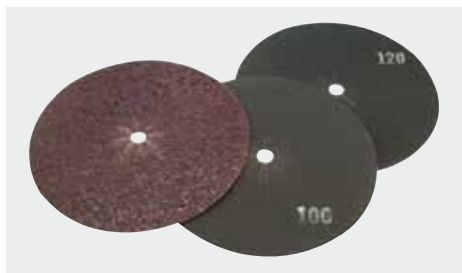
CODE:	GRITS:	DIMENSIONS:	No. PER PACK:
RCP83E050-0203	50	203 mm	1 x 50 m roll
RCP83E060-0203	60	203 mm	1 x 50 m roll
RCP83E080-0203	80	203 mm	1 x 50 m roll
RCP83E100-0203	100	203 mm	1 x 50 m roll
RCP83E120-0203	120	203 mm	1 x 50 m roll
RCP83E050-0254	50	254 mm	1 x 50 m roll
RCP83E060-0254	60	254 mm	1 x 50 m roll
RCP83E080-0254	80	254 mm	1 x 50 m roll
RCP83E100-0254	100	254 mm	1 x 50 m roll
RCP83E120-0254	120	254 mm	1 x 50 m roll

ABRASIVE PAPER ROLL + SPONGE, H 115 mm



CODE:	GRITS:	DIMENSIONS:	No. PER PACK:
RSA295150N	150	25 m	1 box
RSA295180N	180	25 m	1 box
RSA295220N	220	25 m	1 box
RSA295240N	240	25 m	1 box
RSA295280N	280	25 m	1 box
RSA295320N	320	25 m	1 box
RSA295400N	400	25 m	1 box

DUAL PAPER DISCS Ø 425 mm



CODE:	GRITS:	No. PER PACK:
DPS413024	24	5
DPH425060	60	10
DPH425080	80	10
DPH425100	100	10
DPH425120	120	10

MESH DISCS Ø 406 mm



CODE:	GRITS:	No. PER PACK:
DPQ421060	60	10
DPQ421080	80	10
DPQ421100	100	10
DPQ421120	120	10
DPQ421150	150	10
DPQ421180	180	10
DPQ421220	220	10
DPQ421320	320	10

BEAR-TEX DISCS



CODE:	GRITS:	No. PER PACK:
DBS54N	coarse (Black)	5
DBS54B	medium-coarse (Blue)	5
DBS54V	medium (Green)	5
DBS54R	medium-fine (Red)	5
DBS54W	fine (White)	5

ACCESSORIES

ABRASIVES

BEAR-TEX DISC Ø 150 mm

WOODFLEX



CODE AND DESCRIPTION:	GRIT:	No. PER PACK:
048DB32001 Bear-tex disc Ø 150 mm	320	1

VELCRO DISCS Ø 150 mm

WOODFLEX



CODE:	GRITS:	No. PER PACK:
DNB39F040D150	40	50
DNB39F060D150	60	50
DNB39F080D150	80	100
DNB39F100D150	100	100
DNB39F120D150	120	100
DNB39F150D150	150	100

VELCRO SUPPORTS FOR SINGLE-BRUSH SANDER

WOODFLEX



CODE AND DESCRIPTION:	GRITS:	No. PER PACK:
1 DBV400 Adhesive support for DBV425 Ø 425 mm	-	1
2 DBV425 Velcro rubber support Ø 425 mm	-	1
3 DBV152 Velcro rubber support Ø 150 mm	-	1





Industria Chimica Adriatica S.p.A.
Via Sandro Pertini, 52 - Zona Ind.le A
62012 Civitanova Marche (MC) - Italy
Tel. +39 0733 8080 - Fax +39 0733 808140
www.icaspa.com - info@icaspa.com

COMPANY WITH CERTIFIED MANAGEMENT SYSTEMS UNI EN ISO 9001:2000 – UNI EN ISO 14001:2004